

EMORY UNIVERSITY FINANCE DIVISION



CONTROLLER'S OFFICE



ADAM GREENFIELD

Associate Vice President,
Finance, and Controller



STEPHEN FRANGIS
Asst. Controller



NATALIA PANTELEYEVA - 2
Director, Accounting



GYORGYI KATAI - 4
Sr. Director, Financial Reporting, General Accounting, Audit



RENEE CORSELLO - 2
Assc. Director, Finance



SUSAN CLARK
Sr. Director,
Tax



ANNUNZIATA MADDEN
Associate Director,
State/Local Compliance



LAURA FORBES
Associate Director, Tax



VAKELA KELLY
Sr. Director,
Accounting Operations

VACANT POSITION
Director, Acctg. Ops., AR



PATRICIA PETERS - 1
Business Mgr., Sr.



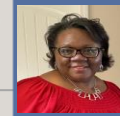
TIRRELL JOHNSON - 3
Business Mgr., Sr.



MONIQUE DAY-2
Business Mgr., Sr.



JOLEEN MITCHELL
Sr. Director,
University Payroll



JULIA BELL - 4
Payroll Asst. Manager

CONTROLLER'S OFFICE



ADAM GREENFIELD

Associate Vice President,
Finance, and Controller



STEPHEN FRANGIS

Asst. Controller



NATALIA PANTELEYEVA

Director,
Accounting



THOMAS BARR

Associate Director,
Finance



HILLARY BOYLEN

Financial Analyst, Sr.



RENEE CORSELLO - 2

Assc. Director,
Finance



RICHARD WENTZ

Financial Analyst, Sr.



JUSTIN HARBIN

Coordinator, Fixed
Assets



GYORGYI KATAI

Sr. Director, Financial
Reporting, General
Accounting, Audit



KELLY CHIN

Associate Director,
Finance



TERRENCE JENKINS

Financial Analyst,
Sr.



ANDRE SULLIVAN

Sr. Accountant I

JIWOO (BETTY) LEE
Financial
Accounting
Audit Analyst I

CONTROLLER'S OFFICE



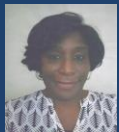
ADAM GREENFIELD

Associate Vice President,
Finance, and Controller



SUSAN CLARK

Sr. Director, Tax



CHARIDA DUMBUYA

Financial Analyst I, Tax



**ANNUNZIATA
MADDEN**

Associate Director,
State/Local Compliance



LAURA FORBES

Associate Director, Tax

CONTROLLER'S OFFICE



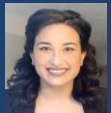
ADAM GREENFIELD

Associate Vice President,
Finance, and Controller



**VAKELA
KELLY**

Sr. Director,
Accounting
Operations



**MARIA
DE LEON**
Financial Analyst,
Sr.



**PATRICIA
PETERS**
Business Manager,
Sr.



**TANIA
CROCKER**
Sr. Accountant II

**VACANT
POSITION**
Director, Accounting
Operations, A/R



VICTORIA BOYER
Sr. Accountant III
(Lead)



RAQUEL LETSON
Sr. Accountant I



IFEOMA UDE
Financial Analyst, Sr.



NADIA SOSIAH
Sr. Accountant II



EVADINE DAVIS
Sr. Accountant I



JOHN WALL IV
Sr. Accountant I



MONIQUE DAY
Business Manager, Sr.



**JOYCE ODA-
STORY**
Financial Analyst II



**MARCIA
BARRY
OSBORNE**
Financial Analyst II



TIRRELL JOHNSON
Business Manager, Sr.



JIM FULTON
Sr. Accountant III



YVON MARS
Sr. Accountant I



PAOLA COTES
Sr. Accountant I

CONTROLLER'S OFFICE - PAYROLL



ADAM GREENFIELD

Associate Vice President,
Finance, and Controller



JOLEEN MITCHELL

Sr. Director,
University Payroll



JULIA BELL

Payroll Asst. Manager



**YUDILEIDI
CHAVEZ**

Payroll Tax Analyst

**EVON
WILSON**

Payroll Asst.



DONNA CAMP

Payroll Specialist, Sr.

**TANGELLIA
HARRIS**

Payroll Specialist



**SATARA
BURLEY**

Payroll Specialist



**ANTOINETTE
BROOKS**

Payroll Specialist, Sr.

TREASURY & FINANCIAL PLANNING



MATTHEW GREAVES
Assc. VP, Treasury & Financial Planning



KIM KONOPKA
Asst Dir., Corp
Budget/Plng/Anl



VINAY SRIVASTAVA
Asst Dir, Debt/Liquidity
Management



SHANNON TURNER
Sr. Dir, Treasury
Management



JALON HARRIS
Treasury Analyst, Sr.

OFFICE OF ENTERPRISE FINANCIAL SYSTEMS



DAVID MILLER

Asst. VP, Enterprise Fin. Systems



DAVID GILES

Sr. Dir, Financial Systems Support



SHOBA MALLIK

Director, Strategic RPA

RONALD MOODY

Enterprise Budget System Analyst III



TRISHA NELSON

Business Analyst III



DAVID OVERBY

Security Mgr, PeopleSoft Financials



URVI PATEL

Sr. Dir., Financial Systems Support



LAWRENCE GOLDBERG

Enterprise PeopleSoft Analyst III



DEBBIE LONG

Enterprise PeopleSoft Analyst II



DEE ANN REICHNER

Enterprise PeopleSoft Analyst III



DAVID WRIGHT

Enterprise PeopleSoft Analyst III



SCOTT CAILLIER

Robotic Process Automation Analyst/Dev III



JASON HUNTER

Robotic Process Automation Analyst/Dev III



ANIKET MAWLANKAR

Robotic Process Automation Analyst/Dev II



KIRAN ISUKAPATLA

Robotic Process Automation Analyst III



AUSTIN GILES

Enterprise Budget System Analyst III



LINDA ERHARD

Business Analyst II



VIDHYA SODHA

Business Analyst II



CHERYL KILGORE

Enterprise Business Analyst II



VAN DANG

Enterprise PeopleSoft Analyst III



NIKETTA JONES

Enterprise PeopleSoft Analyst II



LAURA MARQUEZ REYES

Enterprise PeopleSoft Analyst II

FINANCE ADMINISTRATION & INITIATIVES



ANITA PAYE

Asst. Vice President for
Finance Administration &
Initiatives/Chief of Staff



AMY JONES

Asst. Director,
Finance
Administration &
Initiatives



**TAMMY
HOLLINGSWORTH**

Sr. Director, Integrated
Fin. Planning



**CANDY
HARROWAY**

Coordinator,
Finance
Administration &
Initiatives



LAUREN ROSS

Instructional Designer
II



ARTH SHAH

IFP Analyst II



JULIA GUNN

Communications
Specialist

**VACANT
POSITION**
IFP Analyst I